

CO: 3-Way Pneumatic Operating Valve

The 3-Way Pneumatic Operating Valve (model CO) is pilot operated, and designed for high flow applications. The 3-way valve is available in sizes 1/4", 1/2", 1", 1 1/2" and 2". The valve can be used in one or more synchronous units piloted by a pneumatic pressure switch or solenoid valve (or both) in order to achieve safety, trip or shut down function.

Key features

Exclusive manifold mounting system. It is a special STI application to connect our accessories. Fittings or nipples are not necessary as the connection is achieved using machined connection faces with sealing 'o' ring. This system saves time for assembly, reduces cost on items such as fittings, reducing inventory and the shortened dimensions save space.

- > Suitable for:
 - Standard, offshore, sandstorm and copper-free ambient conditions
 - Single and double acting actuators
 - Low and high ambient temperature

Benefits

- > **Size 1/4"**
2x3 way valves in one body, reduced dimensions
- > **Sizes 1 1/2" - 2"**
Pilot quick exhaust valve included
- > **Sizes 1 1/2" - 2"**
Large size 3 way valve with a special device to switch quickly when in the de-energized position, even when controlled by a low CV pilot
- > **Sizes 1/2" - 1" - 1 1/2" - 2"**
Perfect tight shut off regardless of the flow direction up to 7 bar with pilot pressure over 2 bar when energized
- > **Sizes 1/2" - 1" - 1 1/2" - 2"**
SIL 3 certified



Suitable for low and high ambient temperatures

Compact design



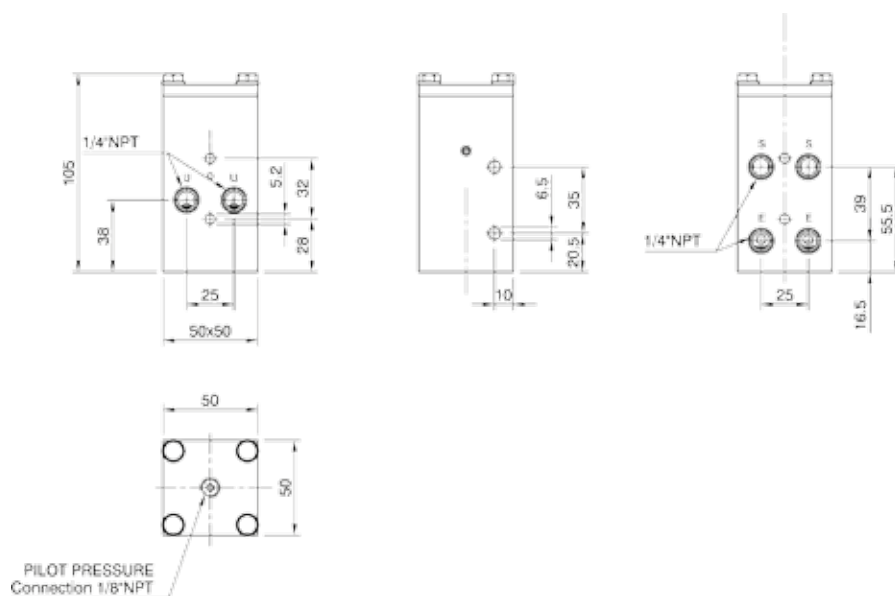
Aluminium and stainless steel options

Technical specifications

	1/4"	1/2"	1"	1 1/2"	2"
Materials	Anodized aluminum Stainless steel 316			Painted RAL 7001 aluminium Stainless steel 316	
CV max	Inlet = 1 Outlet = 1	Inlet = 2.5 Outlet = 2.5	Inlet = 6.5 Outlet = 6.5	Inlet = 10.5 Outlet = 13	Inlet = 45 Outlet = 45
Port size	Pilot signal = 1/8" NPT Others = 1/4" NPT	Pilot signal = 1/8" NPT Others = 1/2" NPT	Pilot signal = 1/4" NPT Others = 1" NPT or manifold mounting	Pilot signal = 1/4" NPT Others = 1 1/2" NPT or manifold mounting	Pilot signal = 1/4" NPT Others = 2" NPT or manifold mounting
Operating pressure	P min = 2.5 bar P max = 7 bar Design pressure = 10 bar				
Operating temperature*	-20°C / +70°C -40°C / +70°C available on request -20°C / +85°C available on request				
Weight	Aluminum = 0.5 kg Stainless steel 316 = 1.7 kg	Aluminum = 1 kg Stainless steel 316 = 1.5 kg	Aluminum = 2.2 kg Stainless steel 316 = 5.1 kg	Aluminum = 4.5 kg Stainless steel 316 = 10 kg	Aluminum = 4.5 kg Stainless steel 316 = 11 kg

* Lower or higher temperatures available on request

Dimensional Drawing for 1/4"

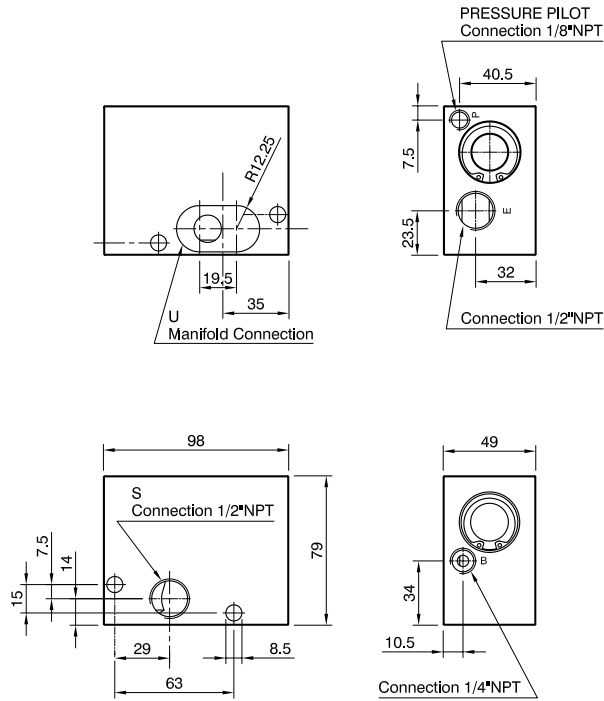


CO 1/4" aluminium



CO 1/4" stainless steel 316

Dimensional Drawing for 1/2"

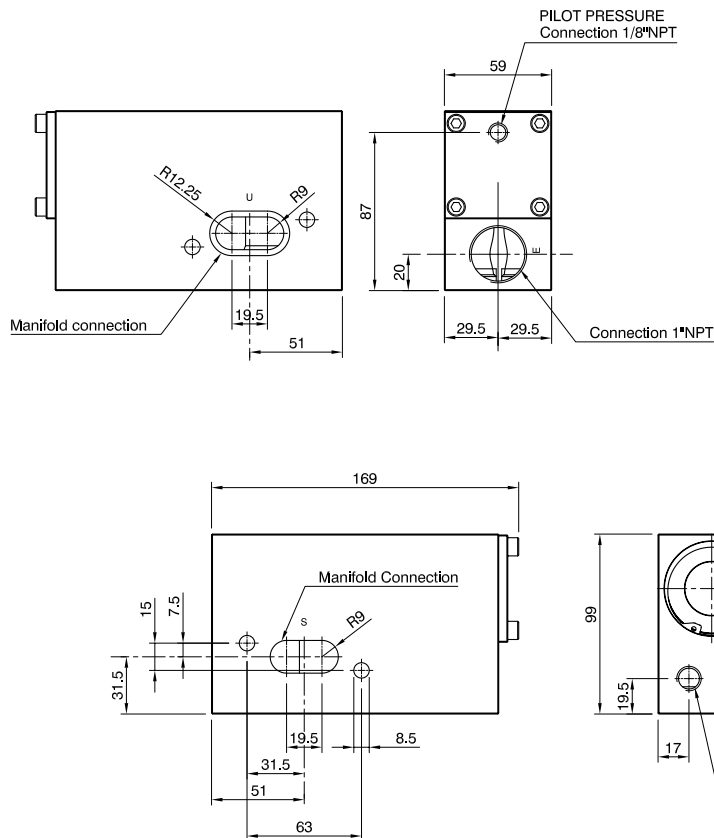


CO 1/2" aluminium manifold mounting



CO 1/2" stainless steel 316 manifold mounting

Dimensional Drawing for 1"

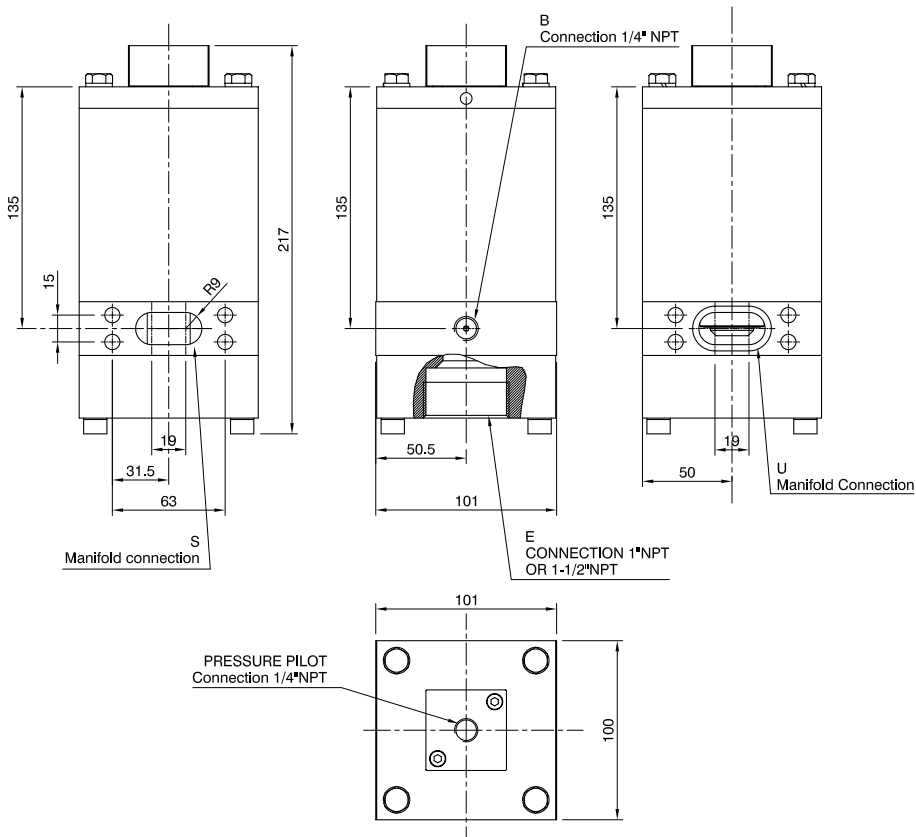


CO 1" aluminium manifold mounting



CO 1" stainless steel manifold mounting

Dimensional Drawing for 1^{1/2}"



Dimensional Drawing for 2"

